

Ichthys Project onshore LNG facilities Update

Community Bulletin #69 – JKC Australia LNG Pty Ltd

Doin' it for the kids: Project on board with the NT Variety Bash



JKC training administrator Jodie Campbell will today make her way to Uluru on the penultimate day of the 2013 Variety Bash NT.

Jodie and friends Jude Bloomfield and Trudy Brown are driving their 1975 HJ Holden panel van named Beryl along the 1700 kilometre Tanunda to Aileron fundraising trip.

Jodie, who is based at Blaydin Point, is undertaking her first NT Variety Bash.

Beginning on 31 August and ending tomorrow (07 September) the Bad Habits Nunz have raised more than \$15,000 for Variety NT. Funds will be used to help NT kids with special needs.

Another Project worker, Territoria Civil Supervisor Jimmy Doyle, is also on the Bash – dubbed 'Wine to Vine'. Driving the Camel Car. Jimmy, who is the NT Volunteer of the Year, is on his fourth NT Variety Bash. Jimmy hopes to raise

\$10,000. Donations can still be made to both cars at NT Variety Bash website at [variety.org.au/nt](http://www.everydayhero.com.au/event/varietyNTBash2013) or at <http://www.everydayhero.com.au/event/varietyNTBash2013>

A wonderful effort! Congratulations to both teams and all those undertaking this year's NT Variety Bash.

Airport park'n'ride to begin operations

JKC's park'n'ride facility at the Darwin Airport will begin operating from Monday morning. Our temporary park'n'ride facility at Yarrowonga has been operating for some time. The park'n'ride locations have been approved following a comprehensive Transport Management Plan, approved by the Northern Territory Government.

To maximise safety and minimise public inconvenience, the Project chose to use buses to limit the increase in traffic on our roads. As private vehicles are excluded from the Blaydin Point site, and

we are trying to limit the number of vehicles at the Accommodation Village, park'n'ride facilities have been developed to provide local workers with dedicated, central areas to park their vehicles prior to collection by the Project's transport contractor Buslink VIVO. Buses collect workers from the park'n'ride locations and take them to either Blaydin Point or the Accommodation Village at Howard Springs and return them to the park'n'ride at the end of their shift.

Please continue to help us safely share our roads.



The Darwin Airport park'n'ride will begin operating from Monday, allowing workers to park their vehicles at a central location, before being collected by Project buses.

Ichthys Project onshore LNG facilities Update

J o h n ' s D e a d l y A w a r d

The Project's John Clarke has been nominated as a finalist for a prestigious Deadly Award to be held at the Sydney Opera House on Tuesday.

Employed as the Workplace Development Manager for John Holland Territoria Civil (JHTC), John was nominated for his contribution to the training and up-skilling of Aboriginal and Torres Strait Islander (ATSI) people in the civil construction industry in Darwin during the past two years.

Currently in its 19th year, the Deadlys are the National Indigenous Music, Sport, Entertainment and Community Awards, held to recognise and celebrate individual's contributions across the nation.

While working on the Project, and in particular during the past 12 months, John has been instrumental in the delivery of JHTC's ATSI trainees, trainee retention and ongoing development. A



significant part of his role is to ensure workers obtain correct licences and tickets allowing them to pursue a career in construction at the end of their training on JHTC projects.

A plumber by trade, John, who has completed his teaching degree and lectured at the Bachelor Institute of Indigenous Tertiary Education, Congratulations John on being a remarkable role model and a deserving finalist in this year's awards and good luck!

Project workers living in the Accommodation Village at Howard Springs were able to vote this week with the Australian Electoral Commission hosting a polling station on site.

About 250 residents were able to cast their vote at the polling booth in the recreation centre on Wednesday and Thursday.

Do you have questions about the Project? Come and talk to us

Howard Springs Shops
Today
Friday 06 September
3.30 – 5.30pm

Howard Springs Shops
Thursday 12 September
3.30 – 5.30pm

**Palmerston Shopping
Centre**
Friday 13 September
3.30 – 5.30pm

Employment enquiries:

Go to www.ichthysjobs.com to register your interest. If you have difficulties online please seek assistance at our Construction Employment Mobilisation Centre, 22 Mitchell Street, Darwin, from 10am to 4pm, Monday to Friday, or call (08) 8980 9999.

Village visit ensures NT Fire and Rescue Service ready to respond

The Accommodation Village at Howard Springs received a visit from the Palmerston branch of the Northern Territory Fire and Rescue Service last month as part of ensuring the Village is prepared for any emergencies.

The crew met with JKC personnel to discuss the procedure for their arrival in the event of an emergency and to view and map the location of essential infrastructure including hydrants and fire indicator panel. JKC's Emergency Management Coordinator is working with NTFRS to ensure all Palmerston crews are familiar with the Village site and layout.

Palmerston Station Officer Gary Osborne is pictured with his crew and JKC's Deputy Village Operations Manager David Wilson, Security Supervisor Scott Fraser, and Village Mechanical Supervisor Roger Montero.

With around 250 residents now calling the Village home, it is imperative that emergency services know how and where they can access the site to ensure they are prepared in the event of an incident.



Ichthys Project onshore LNG facilities Update

This week JKC advises that construction activities at our work sites for the period 07 to 13 September will include:

Blaydin Point

- Six trucks daily carrying long, oversized loads of materials required for foundation preparations travelling from East Arm to site via Tiger Brennan Drive, Stuart Highway, Jenkins and Channel Island roads
- Twenty-seven road trains daily carrying large piles and material and ten trucks carrying office modules from East Arm Port to site via Berrimah and Wishart roads, Elrundie Avenue and Channel Island Road to site
- Fifteen road trains daily from Jenkins Road quarry, via Jenkins and Channel Island roads to site
- Small rock transport by eight road trains daily from Yebna quarry via Stuart Highway, Jenkins and Channel Island roads to site
- Thirty road trains daily transporting crushed rock from Mt Bunday quarry via the Arnhem and Stuart highways, Jenkins and Channel Island roads to site
- Eighteen concrete trucks daily transporting concrete from a batching plant on Channel Island Road to site
- Ten concrete trucks daily travelling from Winnellie batching plant along Tiger Brennan Drive, Wishart Road, Elrundie Avenue and Channel Island Road to site
- Seventeen trucks daily from interstate via Stuart Highway, Jenkins and Channel Island roads to site
- Sixteen road trains daily carrying fill from Howard Springs quarry via Howard Springs Road, Stuart Highway, Jenkins and Channel Island roads to site
- Forty-six daily bus trips carrying workers travelling from Darwin and Palmerston to site
- Nine daily bus trips from HSAV to site
- Foundation preparations will continue on site
- Two shifts working 10 hours per shift, with maintenance performed between each shift

Please Note:

The Northern Territory Government is undertaking road works on Channel Island Road near the entrance to the Wickham Point Immigration Detention centre. Traffic is reduced to one lane and traffic management is in place. Please take care and obey all directions.

Accommodation Village at Howard Springs

- Work will continue at the intersection of Madsen and Stow roads. Limited work will take place on Saturday between 7am and 3pm and Sundays between 9am and 4pm, if required
- Normal activities will continue from 7am to 7pm Monday to Friday and Saturday 7am to 3pm
- Two trucks per day from Mt Bunday via Arnhem and Stuart highways and Howard Springs Road to site
- Six concrete trucks daily travelling from Winnellie batching plant along Tiger Brennan Drive, Stuart Highway and Howard Springs Road to site
- Three trucks per day transporting approximately 12 accommodation modules from Monday to Friday, between 9am and 3pm from Hudson Creek via Berrimah Road, Tiger Brennan Drive, Stuart Highway and Howard Springs Road to site. The trucks will be escorted, and all permits are in place
- From Monday, four buses daily carrying existing construction workforce from the Yarrowonga park'n'ride facility to the Accommodation Village via the Stuart Highway and Howard Springs Road. This will significantly reduce light vehicle traffic around the Accommodation Village

Appropriate dust suppression and street sweeping measures are in place at all JKC construction sites. All truck rock loads are covered. Noise, dust and road conditions will continue to be monitored.

***JKC is committed to ensuring the safety of the community and our workers
– please help us continue to share our roads safely.***

Community feedback – 1300 724 795


www.ichthysproject.com

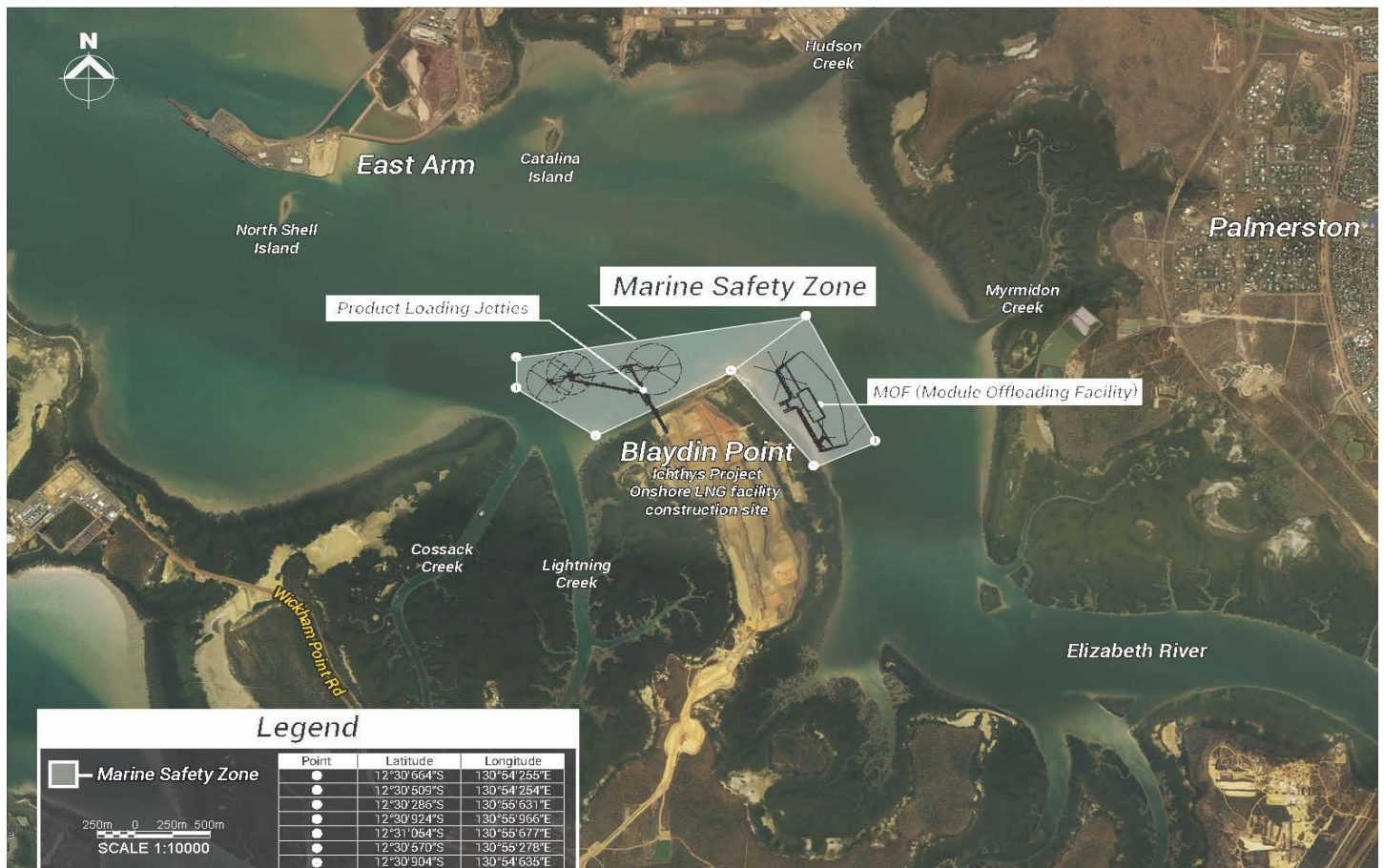
Ichthys Project onshore LNG facilities Update

Marine activity

As you know, we've started work on two key pieces of Project infrastructure at Blaydin Point: the module offloading facility (MOF) and jetty.

For recreational harbour users:

- A number of large marine vessels are now in Darwin Harbour to undertake work on the MOF and jetty near Blaydin Point. More vessels will arrive in the coming weeks
- Please remember to observe the Marine Safety Zone and stay 250 metres away from construction vessels and barges. It is for your and our team's safety
- Production piling has begun at the jetty and will begin at the MOF next week. Accompanying monitoring vessels will be in the area, so please observe the 250 metre safe distance advice
- Slow down around moored vessels or if you see this flag indicating that divers are in the area: 
- Production piling, or piling used for the jetty structure, has begun and will be ongoing for the remainder of the year
- MOF piling will begin next week
- We will have fauna spotters in vessels and noise monitoring devices attached to highly visible buoys as part of the testing
- All divers and snorkelers are requested to please stay well clear of the area for the duration of the activity



For up-to-date information on activities in the harbour, please remember to always check the Notice to Mariners at www.darwinport.nt.gov.au, which includes information on hazards and safety zones.

Alternatively, you can call the Community Feedback number 1300 724 795 for more information.

Community Feedback 1300 724 795