

Ichthys Project onshore LNG facilities Update

Community Bulletin #67 – JKC Australia LNG Pty Ltd

Construction continues on the Accommodation Village at Howard Springs

While our first residents have moved in and made the Accommodation Village their home away from home, there is still much to do before construction of the Village is complete. Current progress is shown in the images below. The Village will be constructed in four phases. While Phase One is complete, construction activities are continuing on the remaining three phases.

Throughout the next month, work will continue on the emergency access point at Madsen Road and the stockpile along Stow Road. As the name suggests, the emergency access road, on the corner of Madsen and Stow roads, will allow emergency service vehicles access to the Village if necessary.

As work continues on that access, you may notice heavy machinery and plant and the pouring of some concrete.

The accommodation modules for phases two and three – 1,700 rooms – have been installed, however internal and external fittings are still being completed.

The installation of the final 800 rooms (Phase Four) will begin next month.

Dust suppression measures, including the use of water trucks, will continue.

Once all four phases of the Village are completed it will be able to accommodate up to 3,500 people.



This week workers at the Accommodation Village at Howard Springs celebrated the safe completion of one million working hours with a giant cake and a bacon and egg morning tea.

Safety awards were distributed by JKC Village Senior Construction Manager George 'Flip' Glazer, Laing O'Rourke Village Project Director Jerry Sheehan, and INPEX Area Construction Manager John Board.

The trio applauded the workforce for their efforts in reaching the milestone and ensuring safety is the highest priority at all times.

Ichthys Project onshore LNG facilities Update

Accommodation Village contractor named NT's best business



JKC Australia LNG Pty Ltd (JKC) would like to congratulate its lower tier subcontractor Top End Pest Control on being named the Telstra Northern Territory Business of the Year.

The Darwin business which has turned 'roaches into riches' was also named the 2013 Small Business Award winner for Darwin.

JKC is proud to have engaged the services of Top End Pest Control, which has continuing contracts on the Ichthys Project onshore LNG facilities at both the Accommodation Village at Howard Springs and at Blaydin Point.

The business has been owned by former Victorian police detective Tim Lambert and his wife Cory, since 2004 and has been a valued contractor on the Project.

Tim Lambert, Director of Top End Pest Control said "it is great to be recognised for efforts in both local development and also leading the way overseas with our Australian green ingenuity.

"We have introduced a termite protection system to the world market that effectively protects properties without leaving a chemical footprint on the environment and to have this environmentally safe product now offered and used internationally is great news." he said.

JKC at Darwin Skills and Employment Expo

JKC was proud to sponsor the recent Darwin Skills, Employment and Careers Expo, giving us another avenue to connect with local job seekers.

JKC's Ichthys Project onshore LNG facilities' Project Director, John Bramley, attended the event and said with a construction workforce at peak of well into the thousands at peak, it was a valuable forum to attend.

"We need a construction workforce and many people who are attending the Expo are looking for jobs so this is a great forum to connect. Some of the roles we have coming up include concreters, crane operators, doggers, riggers, scaffolders and steel fixers, through to bus drivers, paramedics and medical clerks," he said.



Employment enquiries:

Go to www.ichthysjobs.com to register your interest. If you have difficulties online please seek assistance at our Construction Employment Mobilisation Centre, 22 Mitchell Street, Darwin, from 10am to 4pm, Monday to Friday, or call (08) 8980 9999.

Ichthys Project onshore LNG facilities Update

This week JKC advises that construction activities at our work sites for the period 24 – 30 August will include:

Blaydin Point

- Two trucks carrying long, oversized loads of materials required for foundation preparations travelling from East Arm to site via Tiger Brennan Drive, Stuart Highway, Jenkins and Channel Island roads, every three days
- Nineteen road trains carrying large piles and material and three trucks daily carrying office modules from East Arm Port to site via Berrimah and Wishart roads, Elrundie Avenue and Channel Island Road to site
- Fifteen road trains daily from Jenkins Road quarry, via Jenkins and Channel Island roads to site
- Small rock transport by eight road trains daily from Yebna quarry via Stuart Highway, Jenkins and Channel Island roads to site
- Twenty-five road trains daily transporting crushed rock from Mt Bunday quarry via the Arnhem and Stuart highways, Jenkins and Channel Island roads to site
- Twenty concrete trucks daily transporting concrete from a batching plant on Channel Island Road to site
- Five concrete trucks daily travelling from Winnellie batching plant along Tiger Brennan Drive, Wishart Road, Elrundie Avenue and Channel Island Road to site
- Eight trucks daily from interstate via Stuart Highway, Jenkins and Channel Island roads to site
- Two road trains travelling from Syrими Road via Wishart Road, Elrundie Avenue and Channel Island Road to site, and same route from Tivendale Road, as needed
- Twelve road trains daily carrying fill from Howard Springs quarry via Howard Springs Road, Stuart Highway, Jenkins and Channel Island roads to site
- Forty-six round trips per day by buses carrying workers travelling from Darwin and Palmerston to site

- Foundation preparations will continue on site
- Two shifts working 10 hours per shift, with maintenance performed between each shift

Please Note:

Road works near the entrance to the Blaydin Point site on Wickham Point Road are continuing with traffic control in place.

Accommodation Village at Howard Springs

- Work will continue at the intersection of Madsen and Stow roads. Limited work will take place on Saturday between 7am and 3pm and Sundays between 9am and 4pm, if required
- Normal activities will continue from 7am to 7pm Monday to Friday and Saturday 7am to 3pm
- Two trucks per day from Mt Bunday via Arnhem and Stuart highways and Howard Springs Road to site
- Six concrete trucks daily travelling from Winnellie batching plant along Tiger Brennan Drive, Stuart Highway and Howard Springs Road to site

Appropriate dust suppression and street sweeping measures are in place at all JKC construction sites. All truck rock loads are covered. Noise, dust and road conditions will continue to be monitored.

JKC is committed to ensuring the safety of the community and our workers

– please help us continue to share our roads safely.

Community feedback – 1300 724 795


www.ichthysproject.com

Ichthys Project onshore LNG facilities Update

Marine activity

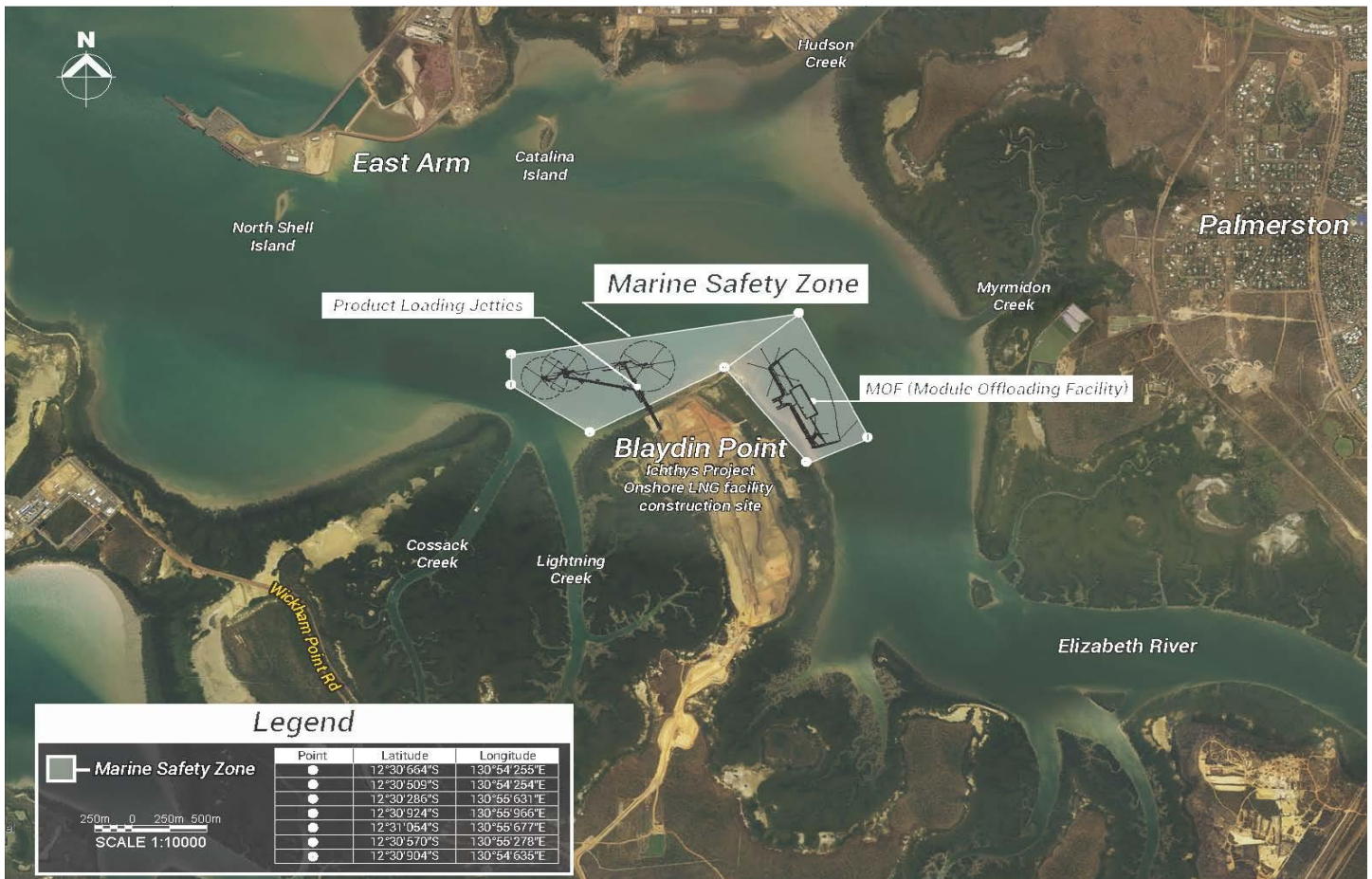
As you know, we've started work on two key pieces of Project infrastructure at Blaydin Point: the module offloading facility (MOF) and jetty.

For recreational harbour users:

- A number of large marine vessels are now in Darwin Harbour to undertake work on the MOF and jetty near Blaydin Point. More vessels will arrive in the coming weeks
- Please remember to observe the Marine Safety Zone and stay 250 metres away from construction vessels and barges. It is for your and our team's safety
- Production piling will begin from Saturday and accompanying monitoring vessels will be in the area, so please observe the 250 metre safe distance advice
- Slow down around moored vessels or if you see this flag  indicating that divers are in the area:

For amateur divers and snorkelers:

- Production piling, or piling used for the jetty structure, will begin soon and will be ongoing for the remainder of the year
- We will have fauna spotters in vessels and noise monitoring devices attached to highly visible buoys as part of the testing
- All divers and snorkelers are requested to please stay well clear of the area for the duration of the activity



For up-to-date information on activities in the harbour, please remember to always check the Notice to Mariners at www.darwinport.nt.gov.au, which includes information on hazards and safety zones. Alternatively, you can call the Community Feedback number 1300 724 795 for more information.