

# Ichthys Project Onshore LNG Facilities Update

## Community Bulletin #90 – JKC Australia LNG Pty Ltd



*BAM Clough's Ian Wenkenbach in front of the cantilever bridge which is being used to construct the jetty.*

## Delicate operation for large marine infrastructure

The Product Loading Jetty will form a vital part of the Project's onshore facilities at Blaydin Point, and progress on the structure is steadily continuing.

The precision placement of pre-cast reinforced concrete T-beams is one of the key elements of construction for JKC's subcontractor for the delivery of the jetty, BAM Clough.

Together with piles and headstock for the foundations, the T-beams form the basis of the structure.

The lowering of the T-beams into place is done with safety as the highest priority and a commitment to absolute precision, making it a delicate operation.

Approximately 400 T-beams are required to construct the jetty, and currently the workforce responsible for the delicate operation is installing an average of three per week. This installation rate will rapidly increase once the

dedicated T-beam placing unit is operational from March with completion of the deck expected this year.

The T-beams are pre-fabricated with two beams making up the roadway, to enable easier transportation and manoeuvring into place by crane, with each weighing around 100 tonnes.

Once the T-beams arrive on site, via heavy vehicle, they are transferred via crane to the cantilever bridge where they are progressively lowered in a precision-timed exercise to be bolted and grouted into place to form part of the structure.

The jetty, which will provide separate berthing access for LNG carriers and LPG/condensate carriers, will be Y-shaped and will be approximately 800m long leading to the LNG berth and a 620m spur leading to the LNG/condensate berth.

# Ichthys Project Onshore LNG Facilities Update

***This week JKC advises that construction activities at our work sites for the period 1 – 7 March will include:***

## **Blaydin Point**

- Eight trucks daily carrying long, oversized loads of materials required for foundation preparations travelling from East Arm Port to site via Tiger Brennan Drive, Stuart Highway, Jenkins and Channel Island roads\*
- Forty-two road trains daily carrying large piles and material from East Arm Port to site via Berrimah and Wishart roads, Elrundie Avenue and Channel Island Road\*
- Twenty-five road trains daily transporting crushed rock from Mt Bundey quarry via the Arnhem and Stuart highways, Jenkins and Channel Island roads to site \*
- Three trucks daily transporting material from the Sunday Creek quarry via the Arnhem and Stuart highways, Jenkins and Channel Island roads to site
- Six concrete trucks daily from Winnellie batching plant along Tiger Brennan Drive, Wishart Road, Elrundie Avenue and Channel Island Road to site
- Ten trucks daily from interstate via Stuart Highway, Jenkins and Channel Island roads to site
- Eight trucks daily carrying fill from Howard Springs quarry via Howard Springs Road, Stuart Highway, Jenkins and Channel Island roads to site
- Twelve trucks daily carrying fill from DAC Howard West quarry via Tulagi Road, Stuart Highway, Jenkins and Channel Island roads to site
- Forty-six buses daily carrying workers from Darwin and Palmerston to site

\* Some restrictions are in place on roads in the Northern Territory. Routes and numbers of trucks will be dependent upon restrictions.

## **Manigurr-ma Village**

- The weekly cyclone alarm testing will occur each Tuesday at 4pm
- Twenty buses daily from Manigurr-ma Village to Blaydin Point
- Six buses daily carrying existing construction workforce from the permanent Yarrowonga park'n'ride facility to Manigurr-ma Village via the Stuart Highway and Howard Springs Road
- Six concrete trucks daily travelling from Winnellie batching plant along Tiger Brennan Drive, Stuart Highway and Howard Springs Road to site
- Two trucks fortnightly from interstate via Stuart Highway to site
- Work at the intersection of Madsen and Stow roads is continuing
- Normal activities will continue from 7am to 7pm Monday to Friday and Saturday 7am to 3pm

## **Park'n'ride Facilities**

- A permanent park'n'ride facility is now available at Georgina Crescent, Yarrowonga
- The park'n'ride facility at the Darwin International Airport is also available

Appropriate dust suppression and street sweeping measures are in place at all JKC construction sites. All truck rock loads are covered. Noise, dust and road conditions will continue to be monitored.

## **Employment enquiries**

To register your interest to work on the Project, go to [www.ichthysjobs.com](http://www.ichthysjobs.com). If you have difficulties online please seek assistance at our Construction Employment Mobilisation Centre (CEMC), 22 Mitchell Street, Darwin, from 10am to 4pm, Monday to Friday, or call (08) 8980 9999.

## **Talk to the team**

**Coolalinga shops**  
Saturday 1 March 10:00am-noon

***JKC is committed to ensuring the safety of the community and our workers  
– please help us continue to share our roads safely.***

**Community Feedback – 1300 724 795**

**[www.ichthysproject.com](http://www.ichthysproject.com)**


**Community Feedback 1300 724 795**

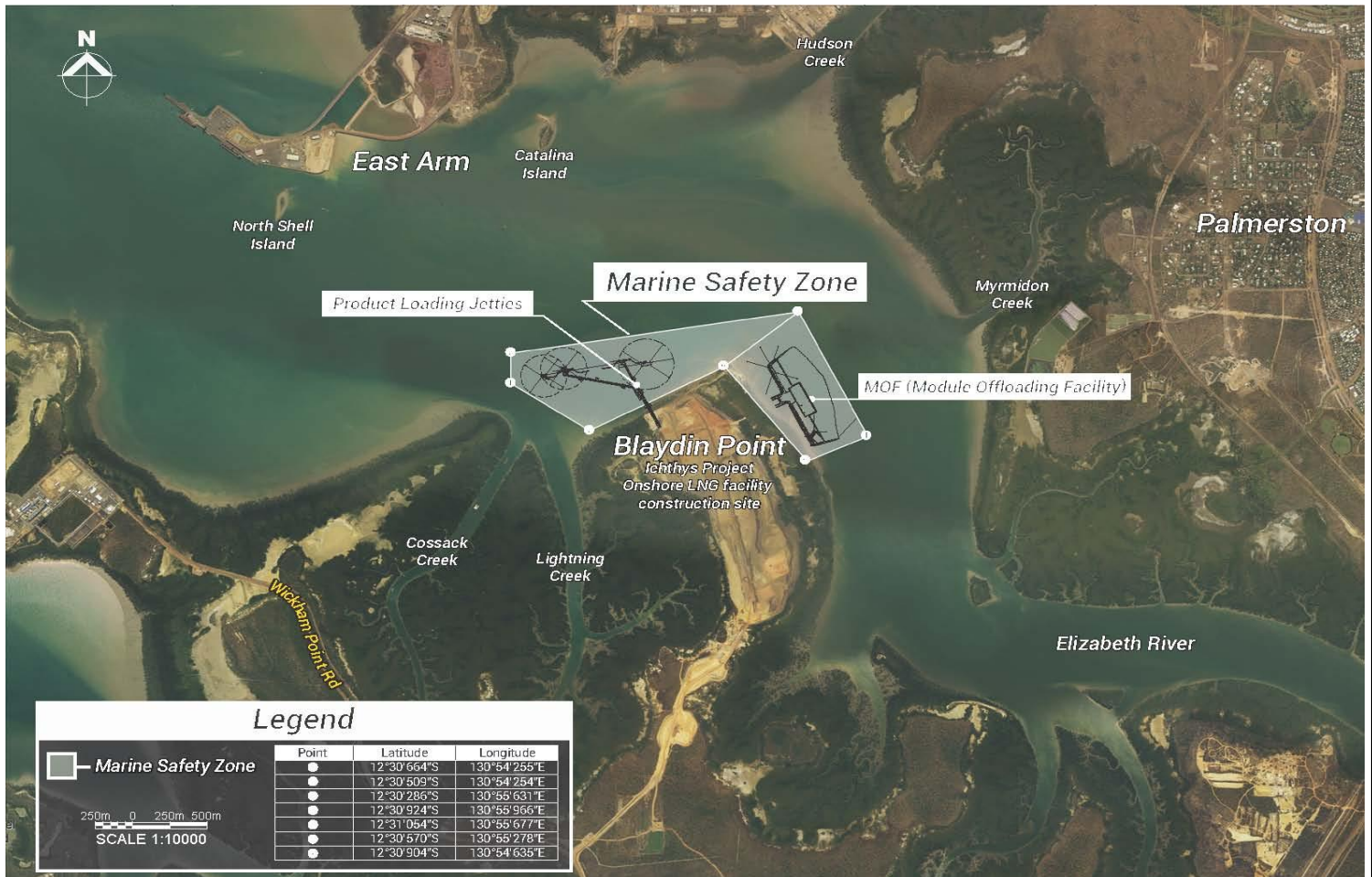


# Ichthys Project Onshore LNG Facilities Update

## Marine activity – advice to snorkelers, divers, boaties and harbour users

### Module offloading facility (MOF) and Jetty

- A number of marine vessels are now in Darwin Harbour working on the MOF and jetty near Blaydin Point
- The cantilever bridge, a large piece of equipment being used to construct the jetty, is now out over the water. Please obey the 250 metre safe distance
- Production piling is ongoing at the MOF and jetty. Accompanying monitoring vessels will be in the area
- A number of barges are working around the MOF and jetty
- Slow down around moored vessels or if you see this flag  indicating there are divers in the area



For up-to-date information on activities in the harbour, please remember to always check the Notice to Mariners at [www.darwinport.nt.gov.au](http://www.darwinport.nt.gov.au), which includes information on hazards and safety zones. Alternatively, you can call the Community Feedback number 1300 724 795 for more information.

Please help us continue to share our waterways safely.