

# Ichthys Project Onshore LNG Facilities Update

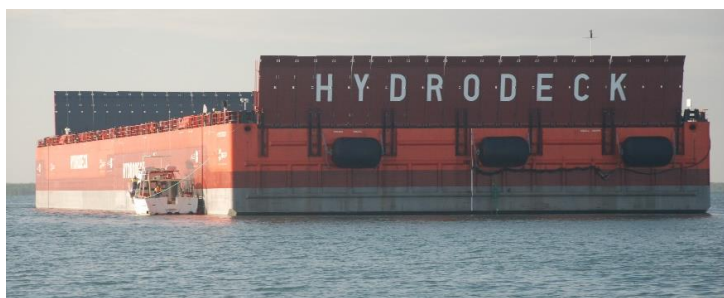
## Community Bulletin #106 – JKC Australia LNG Pty Ltd



*Above: the first of more than 200 very large modules will arrive at the module offloading facility (MOF) next week.*

## Preparing for first module delivery

The Ichthys Project is getting ready for the arrival of its first very large modules, which will be used to construct the onshore LNG processing facilities at Bladin Point. As part of the preparations, the module offloading facility transition pontoon (MOFTP) (image below) will be towed



through Darwin Harbour, past East Arm, to the module offloading facility (MOF) at Bladin Point (see map on back page). The MOFTP is 140 metres long, 40m wide and 12m high. You may have seen it when it arrived in March. It has been anchored at a temporary location south west of Channel Island.

The MOFTP will be used by the Project's construction workforce to help offload large modules at the MOF.

The MOFTP allows modules to be unloaded at times of peak tidal range by ballasting up and down using air and water to create a ramp level with the MOF.

# Ichthys Project Onshore LNG Facilities Update

## Preparing for our first module delivery

*From page one*

More than 200 large modules will arrive in our harbour on marine vessels over the next 18 months, with one module shipment scheduled to arrive about every 14 days.

Module shipments will be escorted by tugs and piloted by Darwin Port Corporation pilots past Darwin and East Arm to the MOF. The MOF is needed to support the offloading of the large modules and oversized equipment that is too large to be transported to site by road.

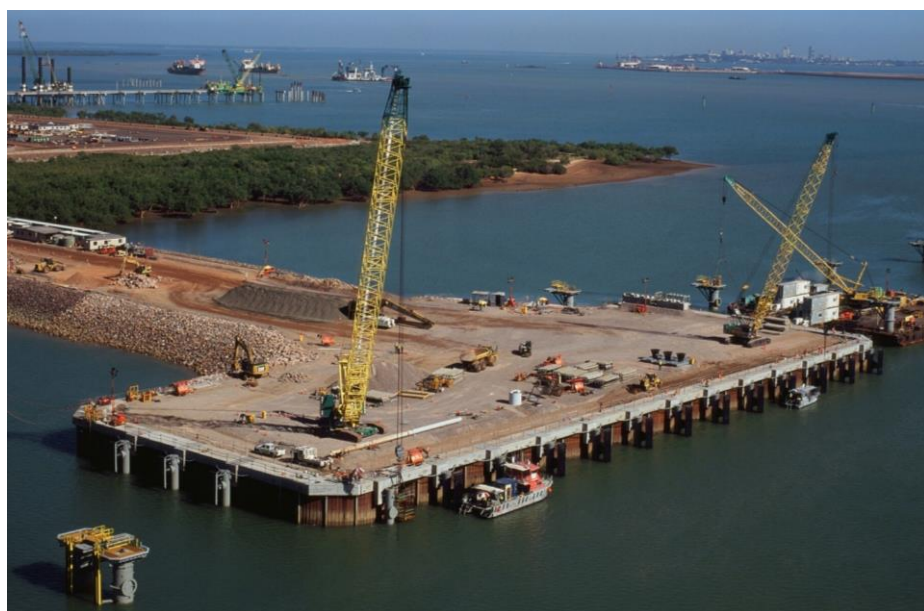
The channel marking the passage of module shipments through the harbour will be marked with a combination of buoys and piled navigation aids.

Darwin Port Corporation's Mariners' Notices will be updated to advise harbour users of any current safety exclusion zones as a result of the module transport.

Recreational harbour users are advised to maintain a safe distance from module shipments as they move through the harbour.

Please help us continue to share our harbour safely.

If you need any further information you can call the Community Feedback number: 1300 724 795



### Module arrival – Fast Facts

**MOFTP** – module offloading transition pontoon

- Assists with constant offloading of large modules from marine vessels to the MOF as it can ballast to suit the tides
- 140 metres long, 40m wide, 12m high

**Modules** – large modular units used in the construction of the gas processing facilities

- More than 200 very large modules
- Weighing up to 7,000 tonnes
- Scheduled to arrive every 14 days
- Shipments will continue for 18 months

### Employment enquiries

To register your interest to work on the Project, go to [www.ichthysjobs.com](http://www.ichthysjobs.com)

If you have difficulties online please seek assistance at our Construction Employment Mobilisation Centre (CEMC), 22 Mitchell Street, Darwin, from 10am to 4pm, Monday to Friday, or call (08) 8980 9999.

### Talk to us

**Palmerston Shops**

Friday 27 June 3pm – 5pm

**Coolalinga Markets**

Saturday 28 June 10am – noon

# Ichthys Project Onshore LNG Facilities Update

*This week JKC advises transport to and from our work sites for the period 21 – 27 June will include:*

## Bladin Point

- Forty-two road trains daily carrying large piles and material from East Arm Port via Berrimah and Wishart roads, Elrundie Avenue, Channel Island and Wickham Point roads to site
- Twenty-five road trains daily transporting crushed rock from Mt Bundey quarry via the Arnhem and Stuart highways, Jenkins, Channel Island and Wickham Point roads to site
- Three trucks daily transporting material from the Sunday Creek quarry via the Arnhem and Stuart highways, Jenkins, Channel Island and Wickham Point roads to site
- Six concrete trucks daily from Winnellie batching plant along Tiger Brennan Drive, Wishart Road, Elrundie Avenue, Channel Island and Wickham Point roads to site
- Ten trucks daily from interstate via Stuart Highway, Jenkins, Channel Island and Wickham Point roads to site
- Eight trucks daily carrying fill from Howard Springs quarry via Howard Springs Road, Stuart Highway, Jenkins, Channel Island and Wickham Point roads to site
- Twelve trucks daily carrying fill from DAC Howard West quarry via Tulagi Road, Stuart Highway, Jenkins, Channel Island and Wickham Point roads to site

## Manigurr-ma Village

- The weekly alarm testing will occur each Tuesday at 4pm
- Construction activities onsite are nearing completion, landscaping work will continue from 7am – 7pm Monday to Friday and on Saturday 7am – 3pm
- Safety barriers have been erected at the Stow Road emergency exit due to damage from a traffic accident. Repairs will be carried out as soon as possible

## Park'n'ride Facilities

- A permanent park'n'ride facility is now available at Georgina Crescent, Yarrowonga
- A temporary park'n'ride facility is in operation at Yarrowonga Road, Yarrowonga
- The park'n'ride facility at the Darwin International Airport is available

## Bussing

- Fifty-two buses daily carrying workers from Darwin and Palmerston to site
- Thirty-four buses daily from Manigurr-ma Village to Bladin Point
- Seventeen buses daily from Darwin International park'n'ride to Bladin Point
- Sixteen buses daily from Yarrowonga park'n'ride facilities to Bladin Point

### Peak bus times:

**Monday to Saturday from 5am – 7am and 4pm – 6pm**




**Appropriate dust suppression and street sweeping measures are in place at all JKC construction sites. All truck rock loads are covered. Noise, dust and road conditions will continue to be monitored.**

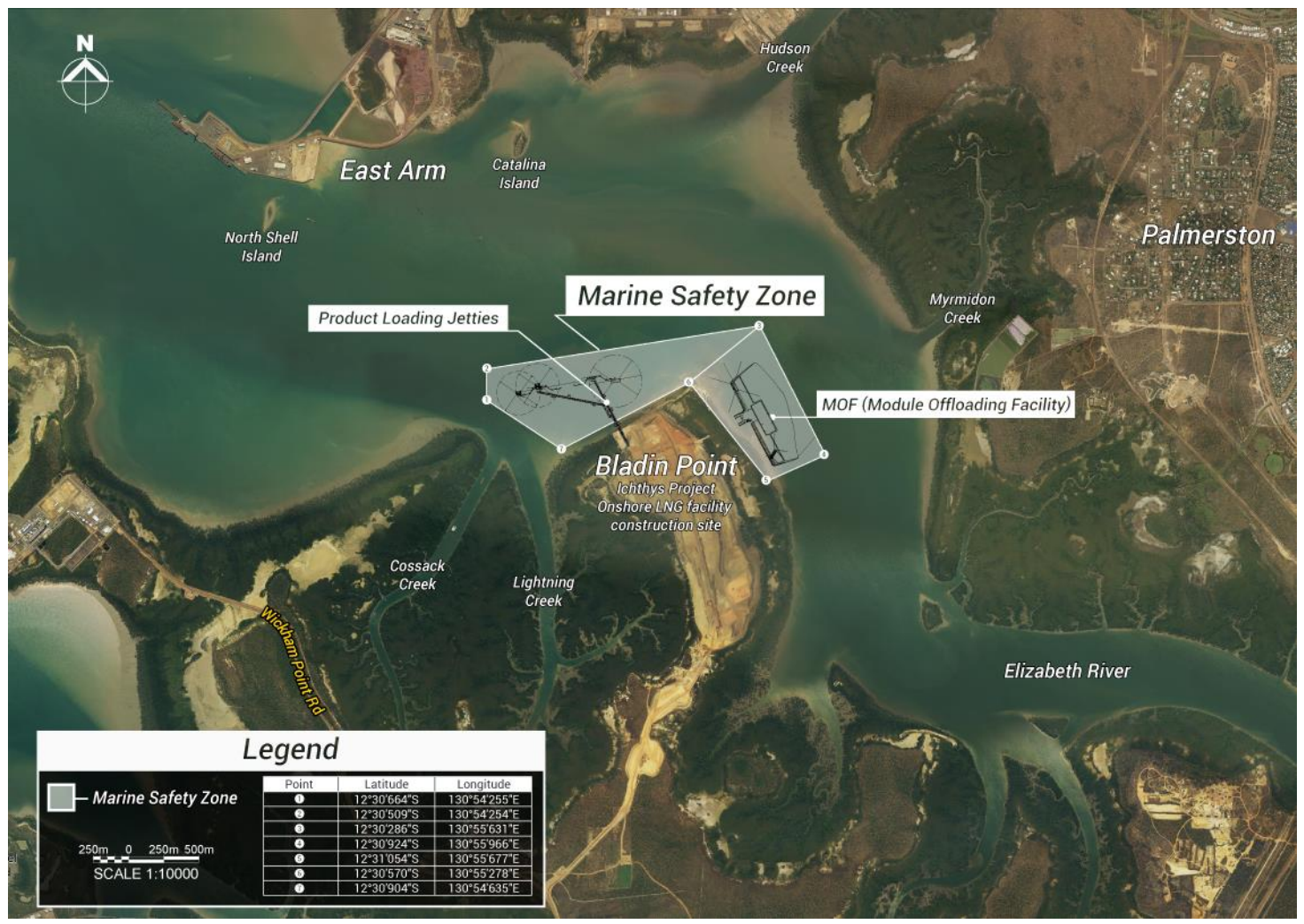
**JKC is committed to ensuring the safety of the community and our workers  
– please help us continue to share our roads safely.**

# Ichthys Project Onshore LNG Facilities Update

## Marine activity – advice to snorkelers, divers, boaties and harbour users

### Module offloading facility (MOF) and Jetty

- A number of marine vessels are now in Darwin Harbour working on the MOF and jetty near Bladin Point
- The cantilever bridge, a large piece of equipment being used to construct the jetty, is now out over the water. Please obey the 250 metre safe distance
- Production piling is ongoing at the jetty. Accompanying monitoring vessels will be in the area
- A number of vessels delivering materials will be arriving in the harbour
- The MOF Transition Pontoon has arrived in Darwin Harbour. It is temporarily moored south west of Channel Island
- Slow down around moored vessels or if you see this flag  indicating there are divers in the area
- Large marine vessels transporting very large modules will begin to arrive in the Darwin Harbour to unload at the MOF



For up-to-date information on activities in the harbour, please remember to always check the Mariners' Notices at [www.darwinport.nt.gov.au](http://www.darwinport.nt.gov.au), which includes information on hazards and safety zones. Alternatively, you can call the Community Feedback number 1300 724 795 for more information.