

## Prelude FLNG Facility ships first LNG cargo

**Tokyo, Japan** – [INPEX CORPORATION](#) (INPEX) announced today that the first shipment of liquefied natural gas (LNG) has sailed from the Prelude Floating Liquefied Natural Gas (FLNG) facility, located 475 kilometres northeast of Broome in Western Australia.

INPEX is involved in developing Prelude in Block WA-44-L offshore Western Australia through its subsidiary INPEX Oil & Gas Australia Proprietary Limited (IOGA) in partnership with Shell, the operator, and other joint venture partners.

The Prelude FLNG facility gathers, processes, stores and offloads natural gas and condensate products at sea. Prelude commenced production of gas from the wellhead <sup>(1)</sup> in December 2018 and shipment of condensate in March 2019.

<sup>(1)</sup> See press release issued on December 26, 2018.

<https://www.inpex.co.jp/english/news/pdf/2018/e20181226.pdf>

IOGA's equity portion of LNG from the Project at plateau production is scheduled to be supplied <sup>(2)</sup> to JERA (approximately 0.56 MTPA) and Shizuoka Gas (approximately 0.07 MTPA), contributing to the stable supply of energy to Japan.

<sup>(2)</sup> See press release issued on May 29, 2014.

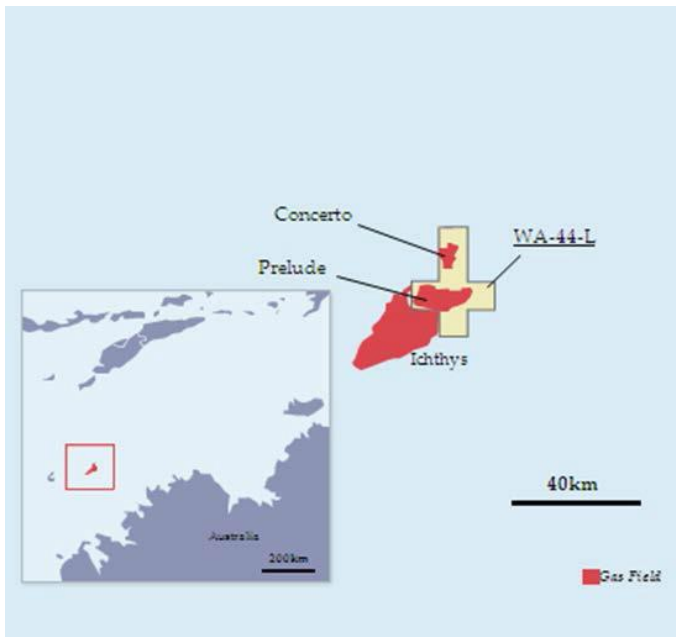
<https://www.inpex.co.jp/english/news/pdf/2014/e20140529.pdf>

INPEX is engaged in multiple natural gas projects worldwide including the Ichthys LNG Project in Australia and the Abadi LNG Project in Indonesia as Operator. INPEX will aim to become a key player in natural gas development and supply in Asia & Oceania, one of the company's business targets outlined in Vision 2040.

While the impact of this matter on the company's consolidated financial results for the fiscal year ending December 2019 is minimal, the project is expected to generate a certain amount of revenue and cash flow from the fiscal year ending December 2020.

**11 June 2019****About Prelude FLNG**

Asset name	Prelude FLNG
Final Investment Decision (FID)	May 2011
INPEX acquisition of participating interest	June 2012
Participating interest ratio	Shell (Operator) 67.5% INPEX 17.5% KOGAS 10% OPIC 5%
Production capacity	LNG 3.6 million tons per year LPG 0.4 million tons per year (at peak) Condensate 1.3 million tons per year (at peak)
Prelude FLNG facility construction contractor	Technip Samsung Consortium (TSC)

**Location of Project****Media Contact:**

Ms Susie Pantall, Communications Manager, INPEX Australia

Office: +61 (0) 862136634

Mobile: +61 (0) 403330020

Email: [susie.pantall@inpex.com.au](mailto:susie.pantall@inpex.com.au)

**About INPEX**

INPEX CORPORATION is Japan's largest exploration and production (E&P) company, and a mid-tier E&P player just behind the world's oil majors. INPEX is currently involved in approximately 70 projects across more than 20 countries, including the Ichthys LNG Project in Australia as Operator. Through sustainably growing its oil and gas development business, developing a global gas value chain business and reinforcing its renewable energy initiatives, INPEX aims to become a leading energy company and continue providing a stable and efficient supply of energy to its customers. For more information, visit <https://www.inpex.co.jp/english/index.html>.